

## Municipal Waste Landfill Inspection Report

<b>Permit Number</b>	100022	<b>EPA ID Number</b>	----
<b>Facility Name</b>	CHRIN BROS SANI LDFL	<b>Operator Name</b>	CHRIN BROS INC
<b>Address</b>	1225 INDUSTRIAL DR	<b>Address</b>	1225 INDUSTRIAL DR
<b>City/State/Zip</b>	EASTON PA 18042-6829	<b>City/State/Zip</b>	EASTON PA 18042-6829
<b>Municipality</b>	Williams Township	<b>County</b>	Northampton
<b>Responsible Official</b>	Gregory Chrin	<b>Title</b>	Owner/ Operator
<b>Person Interviewed</b>	Joeseph Klobusicky	<b>Title</b>	Environmental Manager
		<b>Telephone #</b>	1
<b>Lead Inspector</b>	EDWARD MCNULTY	<b>Title</b>	SLD WSTE SPCST
<b>Additional Personnel</b>	AMY E FAULCH	<b>Title</b>	SLD WSTE SUPV
<b>Site ID</b>	238053	<b>Client ID</b>	42952
<b>PF ID</b>	240650	<b>SF ID</b>	201820
<b>Inspection Start Date</b>	02/19/2025 09:07 AM	<b>Inspection End Date</b>	02/19/2025 10:45 AM
<b>Inspection Type</b>	RTNC - Routine/Complete Inspection	<b>Inspection Result</b>	No Violations Noted
<b>Permit Expiration Date</b>	01/06/2030	<b>Days/Week Operated</b>	6
		<b>Max. Daily Volume</b>	2000 Tons/Day

### Check Lists

<b>Municipal Waste Landfill (0131)</b>			
<b>Status</b>	<b>Requirement</b>	<b>Chapter Citation</b>	<b>Line Item</b>
<b>GENERAL PROVISIONS</b>			

No Violation	Required insurance in effect	271.371	1
	(expiration date) 12/01/2025		1A
No Violation	Operation in accordance with approved plans and permit.	273.201(c)(2)	2
No Violation	Operation within permit boundaries (vertical and horizontal).	273.201(c)(2)	3
No Violation	Disposal Timing and sequence as per Section 273.112(1).	273.201(c)(2)	4
No Violation	No unapproved wastes or liquids.	273.201(d)-(m)	5
No Violation	Isolation distances are adhered to.	273.202(a)	6
No Violation	Facilities certification requirements followed.	273.203(a), (b)	7
No Violation	Written Department approval of new construction prior to waste disposal.	273.203(c)	8
<b>DAILY OPERATIONS</b>			
No Violation	Proper signs posted.	273.211(a)	9
No Violation	Site perimeter clearly marked and grid coordinate system in use.	273.211(b)-(d)	10
No Violation	Proper barriers installed around site and access controlled when attendant not present.	273.212(a)-(i)	11
No Violation	Access roads maintained and negotiable by collection vehicles.	273.213(a)-(i)	12
No Violation	Approved means of measuring and inspected waste utilized. Remark: Chrin's weight scales were last calibrated on 1/28/25	273.214(a), (b)	13
No Violation	Adequate equipment on-site and stand-by equipment available.	273.215(a), (b)	14

No Violation	Vehicles directed promptly to unloading area and promptly unloaded.	273.216(a), (b)	15
No Violation	Solid waste spread and compacted as approved by Department as part of permit.	273.216(c)	16
No Violation	Operator implements fugitive air contaminant control/measures and prevents and controls air pollution including no exceeding of ambient air quality standards, no open burning, and minimizing generation of fugitive dust emissions from facility.	273.217(a)	17
No Violation	Operator complies with Air Quality Plan approval and Air quality Operating Permit.	273.217(b)	18
No Violation	Operator does not cause or allow attraction, harborage, or breeding of vector.	273.218(a)	19
No Violation	Operator implements nuisance minimization and control plan.	273.218(b)(1)	20
No Violation	Operator performs regular, frequent, and comprehensive site inspections to reduce potential for offsite odors.	273.218(b)(2)	21
No Violation	Operator promptly addresses and correct problems and deficiencies discovered during inspections.	273.218(b)(3)	22
No Violation	Operator implements nuisance minimization and control plan to minimize and control other conditions harmful to the environment or public health, or which create safety hazards, odors, dirt, noise, unsightliness and other public nuisances.  Remark: Chrin's odor patrol and nuisance load logs were reviewed. Patrols are being conducted in accordance with their nuisance, minimization and control plan.	273.218(c)	23

No Violation	Operator does not receive solid waste at a landfill in excess of the maximum or average daily volume approved in the permit. Remark: Daily tonnages were reviewed for the period of 1/21/25 to 2/18/25 no exceedances of their 2000 ton limit were observed. the highest daily tonnage for thisle period was 688.5 tons on 2/17/25.	273.221(a)	24
No Violation	Operator implements radiation protection action plan.	273.223(a)	25
No Violation	Operator monitors incoming waste in accordance with Department's guidance or in a manner at least as protective of the environment, facility staff and public health and safety. Remark: Daily radiation source checks were reviewed for the period of 1/21/25 to 2/19/25. Radiation hits: 2/5/25 Lu-177, origin: Bucks County MSW	273.223(b)	26
No Violation	Radiation detector elements shall be as close as practical to wasteload and in appropriate geometry to monitor the waste.	273.223(c)	27
No Violation	Operator has portable radiation monitors capable of determining the dose rate and presence of contamination of a vehicle that has caused an alarm. Upon exceedance of alarm level, a radiological survey of the vehicle is performed.	273.223(d)	28
No Violation	Operator notifies Department immediately and isolates vehicle when radiation dose rates are exceeded.	273.223(e)	29
No Violation	Monitoring equipment is calibrated at frequency specified by manufacturer, but not less than once a year.	273.223(f)	30

No Violation	If radioactive material is detected, vehicle containing material shall not leave facility without written Department approval and an authorized federal Department of Transportation exemption form.	273.223(g)	31
No Violation	Uniform cover of the approved daily cover material is placed on exposed solid waste at the end of each working day or at the end of every 24 hours, whichever interval is less.	273.232(a)	32
No Violation	If intermediate cover requires revegetation, it is established within 30 days.	273.233(e)	33
No Violation	Slopes constructed during daily landfilling and intermediate cover activities may not exceed 50 percent.	273.233(f)	34
No Violation	Operator does not cause or allow waste pollution within or outside the site from operation of the facility.	273.241(a)-(c)	35
Not Applicable	Operator has restored or replaced adversely affected water supply with an alternative source of like quantity and quality.	273.245(a)	36
Not Applicable	Temporary water supply is provided within 48 hours.	273.245(b)	37
Not Applicable	Permanent water supply is provided within 90 days.	273.245(c)	38
No Violation	No waste 15 feet of inside top of the lined perimeter berm.	273.252(e)	39
No Violation	Lined perimeter berm 4 ft. high constructed and maintained along edge of the lined disposal area.	273.252(f)	40
No Violation	Edge of liner clearly marked.	273.252(g)	41
Not Applicable	Alternate leachate recirculation method may be used if approved if one of the liner systems is a composite liner.	273.274(b)	42

No Violation	Underground pipes used to transport leachate to leachate storage impoundments or tanks equipped with secondary containment or comply with 245.445.	273.275(g)	43
Not Applicable	Operator isolates coal seams, coal outcrops and coal refuse from waste deposits to prevent combustion of waste and damage to liner.	273.291(a)	44
Not Applicable	Mine openings within site sealed as approved by Department.	273.291(b)	45
No Violation	Operator implements plan for controlling potential damage from subsidence submitted and approved under 273.120.	273.291(c)	46
No Violation	Landfill designed, constructed, maintained and operated to prevent and minimize potential for fire, explosion, or release of solid waste constituents into air, water, or soil of the Commonwealth.	273.301	47
No Violation	Emergency equipment including portable fire extinguishers, fire control equipment, spill control equipment, and decontamination equipment available. For fire equipment requiring water, facility has a water supply of or adequate quantity and pressure to supply the equipment.	273.302(a)	48
No Violation	Emergency equipment tested and maintained.	273.302(c)	49
No Violation	Adequate space maintained to allow unobstructed movement of emergency personnel and equipment.	273.302(d)	50
No Violation	Litter controlled/collected and barriers/fences in place.	273.220(a)-(c)	51
<b>COVER/SLOPES/REVEGETATION</b>			

No Violation	Daily/intermediate cover meets performance and design requirements. Remark: Intermediate cover in parts of areas 9-A and 9-B had some waste flagging and required more cover.	273.232(b), 273.233(b), (c)	52
No Violation	Minimum 5 day supply of daily and intermediate cover maintained on-site.	273.232(c) 273.233(d)	& 53
No Violation	Intermediate cover applied within time limits.	273.233(a)	54
No Violation	Intermediate slopes do not exceed 50%.	273.232(d)	55
No Violation	Cap placed over entire surface of final lift meets performance standards.	273.234(a)(1)	56
No Violation	Final cover meets performance and design requirements; applied within time limits.	273.234(b)-(e)	57
No Violation	Final slopes stable and erosion controlled.	273.234(f)	58
No Violation	Final slopes graded 3-15% or terraced to 33% as approved.	273.234(g)	59
No Violation	Minimum revegetation and successful revegetation requirements adhered to.	273.235(a)-(e) 273.236(a), (b)	& 60
<b>WATER QUALITY PROTECTION</b>			
No Violation	Surface and groundwater treatment facilities properly operated and maintained.	273.241(b)	61
No Violation	Surface water percolation minimized/prevented.	273.242(b)(1) 273.234(e)(4)	& 62
No Violation	Soil erosion and sedimentation controls designed and implemented as per approved plans; gullies over nine inches repaired. Remark: An erosion rill was observed next to the road up to the working face, in an area called "the narrows," Joe Klobusicky took a photo and made plans to have it fixed.	273.242(a)-(c)	63

No Violation	Sedimentation ponds and discharge structures designed, constructed, operated, and maintained in accordance with Chapters 273, 102, and 105.	273.243(a)-(g) 273.244	& 64
<b>LINER SYSTEM</b>			
No Violation	Liner system designed, constructed, operated, and maintained when required.	273.251(a), (b)	65
No Violation	Edge of liner requirements adhered to (i.e., no waste within 25 feet if adjacent liner, 4 feet high lined berm, to prevent lateral escape of leachate, adequate spacing on inside of berm to collect stormwater and sediment).	273.252(d)	66
No Violation	Leachate detection zone monitored weekly.	273.255(c)	67
No Violation	Protective cover protects primary liner and leachate collection system and allows free flow of leachate into the collection system.	273.257(a)	68
No Violation	Protective cover meets minimum requirements and at least 18 inches thick.	273.257(b)	69
No Violation	Leachate collection system within protective cover meets minimum requirements.	273.258(a), (b)	70
No Violation	Barrier designed, constructed and maintained as required to prevent lateral migration of leachate off-site in surface mined areas.	273.259(a)-(d)	71
No Violation	8 feet of select waste placed over protective cover.	273.260	73
<b>LEACHATE TREATMENT</b>			
No Violation	Leachate collected and handled through Department approved method(s).	273.272(a)-(c)	74
Not Applicable	Leachate transportation requirements adhered to.	273.273(a)-(c)	75



No Violation	Cessation of site operation if alternate leachate handling not available.	273.273(d)	76
Not Applicable	Leachate treatment system permitted and fully operational at least 3 years before closure.	273.273(e)	77
Not Applicable	Leachate recirculation in accordance with regulations.	273.274(1)-(4)	78
No Violation	Leachate collection and storage systems on-site have capacity of 30 days or 250,000 gallons, whichever is greater.	273.275(a)-(f)	79
No Violation	Leachate flow rate measured daily; analyzed quarterly.	273.276(a)-(b)	80
No Violation	Department notified when remedial action(s) required.	273.277(1)-(4)	81
<b>WATER QUALITY MONITORING</b>			
No Violation	Approved monitoring system installed and maintained.	273.281(a), (b) & 273.283	82
No Violation	Quarterly and annual monitoring requirements adhered to and results submitted Department within time constraints.	273.284 & 273.285	83
No Violation	Groundwater assessment plan submitted and implement as required.	273.286(a)-(g)	84
No Violation	Groundwater abatement plan submitted and implemented as required.	273.287(a)-(f)	85
<b>RECORDKEEPING AND REPORTING</b>			
No Violation	Operational records maintained, available and submitted as required.	273.288 & 273.311-273.313	86
No Violation	Daily Operational Records kept in accordance with regulations for the life of the facility bond or longer if necessary.	273.311(d)	87

No Violation	Operator submits quarterly operation report.	273.312	88
No Violation	Operator submits annual operation report with fee.	273.313	89
<b>MINERALS AND GAS</b>			
No Violation	Gas venting and monitoring in accordance with approved plans.	273.292(a)-(d)	90
No Violation	Combustible gas levels not exceeded.	273.292(e)	91
No Violation	Forced gas venting if required.	273.292(f)	92
No Violation	Gas recovery conducted as per approved plan and §273.293, including annual analysis.	273.293(a), (b)	93
<b>EMERGENCY PROCEDURES</b>			
No Violation	Contingency plan implemented if there is an emergency.	273.303(a)-(c)	94
<b>RECYCLING</b>			
No Violation	Operator shall salvage and recycle waste in accord with recycling plan. (273.196)	273.331(a)	95
No Violation	Salvaging and recycling controlled by operator and prevents interference within operations and prevents health hazardous nuisance.	273.331(b)	96
No Violation	Salvaged materials stored in an approved area or transported offsite.	273.331(c)	97
No Violation	Drop off center established for at least three recyclables.	273.332(a)	98
No Violation	Drop off center properly located, contains bins or containers, open at least 8 hours per week and 4 hours during evenings or weekends.	273.332(b), (c)	99

No Violation	Approved public notice of availability of drop off center availability is provided.	273.332(d)	100
No Violation	On or before January 15 each year, operator informs municipality in writing of weight and type of materials recycled previous year.	273.332(e)	101
<b>SPECIAL HANDLING AND RESIDUAL WASTES</b>			
No Violation	Special handling and residual wastes disposed with prior Department approval, and in accordance with permit and Chapter 273.	273.501	102
Not Applicable	Infectious waste disposal restrictions adhered to.	273.511(a)-(d)	103
Not Applicable	Chemotherapeutic waste disposal restrictions adhered to.	273.512	104
No Violation	Sewage sludge co-disposal and monofill requirements followed.	273.513	105
No Violation	Sewage sludge sampling requirements adhered to and sludge meets standards for control of pathogens, vectors, and odors.	273.513(c)	106
Not Applicable	Disposal of municipal waste incineration ash in landfill or landfill cell that meets Chapter 273 requirements.	273.514(a)	107
Not Applicable	Ash residue disposal in dedicated landfill or landfill cell unless co-disposal in accordance with Chapter 273 (including leachability treatment).	273.514(b)	108
Not Applicable	Ash residue covered immediately or as approved by the Department.	273.514(c)	109
<b>BONDING AND INSURANCE</b>			
No Violation	Bond filed with Department.	271.312	110

No Violation	Bond maintained in an amount and with 271.333(b) guarantees as required.	111
	Bond amount \$	111A
	Phased deposit due date	111B
No Violation	Proof of a commercial policy of liability 271.374 insurances submitted to the Department as specified by 271.374.	112
	Policy # GEC003617613	112A
	Insurer (company name) Greenwich Insurance Company	112B
	Expiration Date: 12/01/2025	112C

### Comments

On February 19, 2025, the PA department of environmental protection ("the Department") conducted a complete routine inspection at Chrin Bros. Sanitary Landfill ("Chrin") representing the Department was Ed McNulty ("this inspector") and Amy Faulch. Joseph Klobusicky provided a site tour and was interviewed on behalf of Chrin.

The following Department personnel have entered the landfill since the last inspection on 1/21/25: A. Faulch and E. McNulty on 2/19/25.

A pre-entry odor patrol was conducted in the vicinity of Chrin beginning at 9:07 hours. Slight intermittent gas odors were observed near intersection of Morgan Hill Road and Spring Valley Road and on Mountain top road. Spring Valley Road was mostly inaccessible due to tree trimming at this time. No other waste related odors were detected.

Roads inside the landfill were OK. The working face was in cell 9-A. One bulldozer, one compactor and

one excavator were operating at the working face. The excavator was observed, digging frozen waste out of a rolloff bin. Daylighting waste was observed in both cell 9-A and 9-B, Joe Klobusicky said additional cover would be applied in these areas.

Waste relocation project is ongoing, a pile of relocated waste was present at the working face. Chrin is preparing to install temporary cap in 3-D but not until warmer weather. Stages 10, 11, and 12 of the western expansion were being excavated. Construction of MSE wall continues, landfill entrance and leachate storage tank will eventually be relocated. The weather station was scheduled to be completed the following week.

A strong gas odor was detected near area 9B Joe Klobusicky marked the location to have the gas pipes repaired.

Flare 3 was not yet running after being relocated. Flare 4 was operating.

A crew was observed performing maintenance on leachate pump station 6 removing buildup.

#### ODOR COMPLAINTS:

Since the 1/21/25 inspection report was issued on 1/31/25, the Department received two odor complaints. Odor patrols were conducted on 2/14/25(eFACTS #3918641), 2/19/25 (eFACTs #3932581), and 2/26/25 (eFACTs #3926907)

### Check List Comments

---

**Line Item 13** - Approved means of measuring and inspected waste utilized.

**Remark:** Chrin's weight scales were last calibrated on 1/28/25

**Line Item 23** - Operator implements nuisance minimization and control plan to minimize and control

other conditions harmful to the environment or public health, or which create safety hazards, odors, dirt, noise, unsightliness and other public nuisances.

**Remark:** Chrin's odor patrol and nuisance load logs were reviewed. Patrols are being conducted in accordance with their nuisance, minimization and control plan.

**Line Item 24** - Operator does not receive solid waste at a landfill in excess of the maximum or average daily volume approved in the permit.

**Remark:** Daily tonnages were reviewed for the period of 1/21/25 to 2/18/25 no exceedances of their 2000 ton limit were observed. the highest daily tonnage for thistle period was 688.5 tons on 2/17/25.

**Line Item 26** - Operator monitors incoming waste in accordance with Department's guidance or in a manner at least as protective of the environment, facility staff and public health and safety.

**Remark:** Daily radiation source checks were reviewed for the period of 1/21/25 to 2/19/25. Radiation hits: 2/5/25 Lu-177, origin: Bucks County MSW

**Line Item 52** - Daily/intermediate cover meets performance and design requirements.

**Remark:** Intermediate cover in parts of areas 9-A and 9-B had some waste flagging and required more cover.

**Line Item 63** - Soil erosion and sedimentation controls designed and implemented as per approved plans; gullies over nine inches repaired.

**Remark:** An erosion rill was observed next to the road up to the working face, in an area called "the narrows," Joe Klobusicky took a photo and made plans to have it fixed.

## Inspection Report Signature Page

---

This inspection report is notice of the findings of an inspection conducted by a representative of the Department. This report is formal notification of any violations observed during the inspection. Additional notification of violations may be issued concerning either Violations noted herein, or other violations identified as a result of review of laboratory analyses. This report does not constitute an order or other appealable action of the Department. Nothing contained herein shall be deemed to grant or imply immunity from legal action for any violation noted herein. Signature by the persons interviewed does not necessarily imply concurrence with the findings of this report, but does acknowledge that the person was shown the report or that a copy was left with the person.

### Signatures

---

Person

Interviewed

Unable To Obtain Reason: Delivered via email

Date --/--/----

Inspector



Date 03/10/2025

CASE: Chmn Landfill

Investigator: A. Fawich Date: 2/14/25

Weather Conditions: Sunny, 29°F, wind WNW @ 14 mph, 41% H

**ODOR PATROL SURVEY**

eFACTS# 3918641

SURVEY LOCATION	TIME	ODOR INTENSITY S = Strong M = Moderate SL = Slight N = None	ODOR DURATION P = Persistent I = Intermittent N = None	ODOR DESCRIPTION EG = Rotten Egg LFG = Landfill Gas G = Garbage S = Sewage D = Dredge O = Other (describe)	COMMENTS & OBSERVATIONS
1-78	932	N			
MHRx Industrial	935	N			
Cedernite	936	N			
Seage Trt Plant	939	N			
Congressional	941	N			
Clubhouse	942	N			
Turnberry	943	N			
Merton	944	N			
Clubhouse	945	N			
Pinehurst	946	N			
Pine Valley	947	N			
Bethpage	949	N			
Waterford	949	N			
Proswick	950	N			
Old Course	950	N			
St Andrews	951	N			
Oak Hill	951	N			
Clubhouse	952	N			



Investigator: A. FawcettDate: 2/14/25CASE: Chin Landfill

## ODOR PATROL SURVEY

Weather Conditions: \_\_\_\_\_

EFACTS # 3918641

SURVEY LOCATION	TIME	ODOR INTENSITY		ODOR DURATION		ODOR DESCRIPTION EG = Rotten Egg LFG = Landfill Gas G = Garbage S = Sewage D = Dredge O = Other (describe)	COMMENTS & OBSERVATIONS
		S = Strong M = Moderate SL = Slight N = None		P = Persistent I = Intermittent N = None			
Spring Valley	953	SL		I		LFG / G	very light landfill gas & "metallic" garbage odor
Mt. Top	957	N					
Waltner Loop	958	N					
Morgan Hill Rd	959	N					
MHR x Industrial	1001	N					
Industrial	1001	N					
Morrave	1003	SL		I		O	light wood burning odor
Morgan Hill Rd	1006	N					
Spring Valley	1008	SL		I		G	light garbage odor @ end of SVR
Morgan Hill Rd	1011	N					
MHR x Industrial	1013	N					

Investigator: E. McNulty / A. Faulch Date: 2/19/25  
 Weather Conditions: Sunny, 17°F, wind W @ 11 mph, 50% H

CASE: Chris Landfill  
**ODOR PATROL SURVEY**

SURVEY LOCATION	TIME	ODOR INTENSITY S = Strong M = Moderate SL = Slight N = None	ODOR DURATION P = Persistent I = Intermittent N = None	ODOR DESCRIPTION	COMMENTS & OBSERVATIONS
				EG = Rotten Egg LFG = Landfill Gas G = Garbage S = Sewage D = Dredge O = Other (describe)	
1-78	907	N			
MHRx Industrial	910	N			
Cedarville	911	N			
Knollwood	913	N			
Auburn	914	N			
Sewage Trt. Plant	917	N			
MHRx Industrial	920	N			
Industrial	920	N			
Morrise	922	M	I	O	worst smore odor
Morgan Hill Rd	926	SL	I	LFG	LFG near Spring Valley Rd.
Spring Valley	927	N			could not access end of SVR due to tree-trimming
Mt. Top	927	SL	I	LFG	LFG odor
Waltham Loop	928	N			
Clothouse	930	N			
Oak Hill	930	N			
Pine Valley	931	N			
Bethpage	933	N			
Waterford	933	N			

eFACTS # 3932581

Investigator: E. McNulty / A. Faulkner Date: 2/19/25

CASE: Chris Landfill

Weather Conditions: \_\_\_\_\_

**ODOR PATROL SURVEY**

SURVEY LOCATION	TIME	ODOR INTENSITY S = Strong M = Moderate SL = Slight N = None	ODOR DURATION P = Persistent I = Intermittent N = None	ODOR DESCRIPTION	COMMENTS & OBSERVATIONS
				EG = Rotten Egg LFG = Landfill Gas G = Garbage S = Sewage D = Dredge O = Other (describe)	
Prestwick	934	N			
Old Course	934	N			
St. Andrews	935	N			
Pinehurst	936	N			
Clubhouse	936	N			
Turnberry	937	N			
Merion	938	N			
Water Tower	939	N			
Clubhouse	940	N			
Morgan Hill Rd	942	N			
MHRx Industrial	943	N			
Industrial	944	N			
ENTER LANDFILL	946				

Investigator: A. FaulchDate: 2/26/25CASE: Chrin LandfillWeather Conditions: partly cloudy, 53°F, wind w@9mph, 42% H

## ODOR PATROL SURVEY

SURVEY LOCATION	TIME	ODOR INTENSITY S = Strong M = Moderate SL = Slight N = None	ODOR DURATION P = Persistent I = Intermittent N = None	ODOR DESCRIPTION	COMMENTS & OBSERVATIONS
				EG = Rotten Egg LFG = Landfill Gas G = Garbage S = Sewage D = Dredge O = Other (describe)	
1-78	1320	N			EFACTS# 3926907
MHR Industrial	1324	N			
Cedarville	1324	N			
Sewage Trt. Plant	1327	N			
Congressional	1329	N			
Clubhouse	1330	N			
Turnberry	1331	N			
Merion	1332	N			
Clubhouse	1333	N			
Pinehurst	1334	N			
Bethpage	1335	N			
Waterford	1335	N			
Prestwick	1336	N			
Old Course	1336	N			
St. Andrews	1337	N			
Oak Hill	1337	N			
Pine Valley	1338	N			
Clubhouse	1340	N			

Investigator: A. FaulchDate: 2/26/25CASE: Chrin LandfillWeather Conditions: partly cloudy, 53°F, wind W @ 9 mph, 42% H

## ODOR PATROL SURVEY

SURVEY LOCATION	TIME	ODOR INTENSITY S = Strong M = Moderate SL = Slight N = None	ODOR DURATION P = Persistent I = Intermittent N = None	ODOR DESCRIPTION	COMMENTS & OBSERVATIONS
				EG = Rotten Egg LFG = Landfill Gas G = Garbage S = Sewage D = Dredge O = Other (describe)	
Spring Valley	1340	N			
Mt. Top	1345	N			
Waltman Loop	1346	N			
Morgan Hill Rd	1347	SL	I	G	very light garbage odor @ switchback
MHR x Industrial	1349	N			
Industrial	1349	N			
Mervale	1353	N			
Morgan Hill Rd	1357	SL	P	G	light garbage odor near switchback
MHR x Industrial	1358	N			

## CHRIN ODOR COMPLAINT LOG (1225 Industrial Dr., Easton, PA 18042)

Date	Time	Address	Distance from Landfill (miles)	Weather Data (Allentown KABE) www.wunderground.com			Residence / Drive-by	Description / Notes	Gas Management Data					Date of Initial Response	Addressed in Insp Report Dated
				Skies	Temperature °F	Wind (out of)			Flare 1 (scfm)	Flare 3 (scfm)	Flare 4 (scfm)	PPL (scfm)	Total (scfm)		
01/17/25	9:19	unknown	unknown		28	East/Southeast 0-1 mph	Residence	Every morning for the past year+ between the hours of roughly 7am-10 am and in early evening hours my neighborhood has overwhelming smell of methane gas. The belief is this odor is off gassing from the Chrin landfill. This has been a noticeable problem for the past year or so at least. I have acute asthma and suffer lung irritation and burning as a result of this when exercising or working outside during periods when the odor is level is high. I fear a toxic situation exists.			2300		2300	01/21/25	01/21/25
01/20/25	8:33	Morgan Hill Rd., Easton	1.390		15	Northeast 0-2 mph	Residence	The dump smells terrible again.			2500		2500	01/21/25	01/21/25
02/10/25	2:30	Merion Ln., Easton	1.744				Residence	At about 2:30 in the morning the landfill stunk so bad that the smell came in through my open window.						02/14/25	02/19/25
02/26/25	16:13	Waltman Loop	0.943				Residence	Garbage and methane smell. At home.							

CHRIN BROTHERS LANDFILL

27 2025	Daily	Total Week	Month Average	Day	Total Month	Total Quarter
<b>January</b>						
1	<b>HOLIDAY</b>			1		
2	638.4		319.2	2	638.4	638.4
3	592.7		410.4	3	1,231.1	1,231.1
4	199.3		357.6	4	1,430.4	1,430.4
5		<b>1,430.35</b>			1,430.4	1,430.4
6	616.2		409.3	5	2,046.6	2,046.6
7	509.7		426.0	6	2,556.3	2,556.3
8	500.4		436.7	7	3,056.7	3,056.7
9	527.4		448.0	8	3,584.1	3,584.1
10	446.7		447.9	9	4,030.8	4,030.8
11	42.5		407.3	10	4,073.3	4,073.3
12		<b>2,642.93</b>			4,073.3	4,073.3
13	576.1		422.7	11	4,649.4	4,649.4
14	541.8		432.6	12	5,191.2	5,191.2
15	483.5		436.5	13	5,674.7	5,674.7
16	476.2		439.3	14	6,150.9	6,150.9
17	464.7		441.0	15	6,615.6	6,615.6
18	64.6		417.5	16	6,680.2	6,680.2
19		<b>2,606.87</b>			6,680.2	6,680.2
20	323.8		412.0	17	7,004.0	7,004.0
21	488.4		416.2	18	7,492.4	7,492.4
22	503.2		420.8	19	7,995.6	7,995.6
23	515.1		425.5	20	8,510.6	8,510.6
24	543.2		431.1	21	9,053.8	9,053.8
25	76.6		415.0	22	9,130.4	9,130.4
26		<b>2,450.20</b>			9,130.4	9,130.4
27	460.3		417.0	23	9,590.7	9,590.7
28	442.2		418.0	24	10,032.9	10,032.9
29	470.3		420.1	25	10,503.2	10,503.2
30	486.3		422.7	26	10,989.5	11,476.8
31	487.3		425.1	27	11,476.8	11,476.8
<b>Month Total</b>						
<b>11,476.8</b>						



CHRIN BROTHERS LANDFILL

27 2025	Daily	Total Week	Month Average	Day	Total Month	Total Quarter
25 2025	Daily	Total Week	Month Average	Day	Total Month	Total Quarter
<b>February</b>						
1	69.2		69.2	1	69.2	11,546.0
2		<b>2,415.61</b>			69.2	11,546.0
3	507.4		288.3	2	576.5	12,053.3
4	588.8		388.4	3	1,165.3	12,642.1
5	607.8		443.3	4	1,773.2	13,250.0
6	146.7		354.6	5	1,773.2	13,250.0
7	541.8		320.0	6	1,919.9	13,396.7
8	191.5		351.7	7	2,461.7	13,938.5
9		<b>2,583.99</b>			2,653.2	14,130.0
10	517.2		331.6	8	2,653.2	14,130.0
11	491.5		352.3	9	3,170.4	14,647.2
12	445.5		366.2	10	3,661.9	15,138.7
13	408.8		373.4	11	4,107.3	15,584.1
14	397.5		376.3	12	4,516.1	15,992.9
15	40.6		378.0	13	4,913.6	16,390.4
16		<b>2,301.12</b>			4,954.3	16,431.1
17	688.5		353.9	14	4,954.3	16,431.1
18	455.5		376.2	15	5,642.8	17,119.6
19	427.1		381.1	16	6,098.3	17,575.1
20	500.5		383.8	17	6,525.4	18,002.2
21	462.3		390.3	18	7,025.9	18,502.7
22	77.3		394.1	19	7,488.2	18,965.0
23		<b>2,611.21</b>			7,565.5	19,042.3
24	576.9		378.3	20	7,565.5	19,042.3
25	542.1		387.7	21	8,142.4	19,619.2
26	497.5		394.7	22	8,684.5	20,161.3
27	444.8		418.6	23	9,626.8	21,103.6
28	619.5		426.9	24	10,246.3	21,723.1
29			409.9	25	10,246.3	21,723.1
<b>Month Total</b>						
<b>10,246.3</b>						

WEEKLY DUMPING



## Chrin Brothers Sanitary Landfill 2024 Leachate Flow Summary

### Leachate

Reading Date	Month	Reading	Monthly Flow	Gallons Per Day	GPD Per Acre	Quarterly Flows		
						Flow	Gal/Day	GPD/Ac
12/31/2024	DEC	574,400	255,158					
1/31/2025	JAN	1,335,733	761,333	24,559	233			
2/28/2025	FEB	337,394	448,206	16,007	152			
3/31/2025	MAR	0	-337,394	-10,884	-103	872,145	9,691	92
4/30/2025	APR		0	0	0			
5/31/2025	MAY	0		0	0			
6/30/2025	JUN	0		0	0	0	0	0
7/31/2025	JUL	0		0	0			
8/31/2025	AUG	0		0	0			
9/30/2025	SEP	0	0	0	0	0	0	0
10/31/2025	OCT	0	0	0	0			
11/30/2025	NOV	0		0	0			
12/31/2026	DEC	0	0	0	0	0	0	0
Total Yearly Flow				0	0			

meter reset

1. There are 105.6 acres of area contributing to the leachate flows, 30 acres of the old unlined landfill and 75.6 acres of lined landfill.
2. Chrin changed flowmeters and the sewer discharge location to MH-2 on April 7, 2014.

## Faulch, Amy

---

**From:** Faulch, Amy  
**Sent:** Friday, February 14, 2025 12:34 PM  
**To:** Joe Klobusicky  
**Cc:** McNulty, Edward  
**Subject:** RE: [External] RE: Odor on Spring Valley Rd.

Thank you Joe for following up!

**Amy E. Faulch** | Solid Waste Supervisor  
Department of Environmental Protection | Waste Management  
Bethlehem District Office  
4530 Bath Pike | Bethlehem, PA 18017  
Phone: 610.861.2063  
[www.depweb.state.pa.us](http://www.depweb.state.pa.us)

**DEP is Going Paperless:** To assist DEP in reaching this goal, the NERO Waste Management Program is requesting that **ALL documents** submitted to the Northeast Regional Office Waste Management Program, with the exception of documents submitted through the ePermitting or OnBase applications, be submitted by email as an attachment to this resource account [ra-epwm-nero@pa.gov](mailto:ra-epwm-nero@pa.gov)

---

**From:** Joe Klobusicky <jklobusicky@chrin.org>  
**Sent:** Friday, February 14, 2025 12:25 PM  
**To:** Faulch, Amy <afaulch@pa.gov>  
**Cc:** McNulty, Edward <edmcnulty@pa.gov>  
**Subject:** [External] RE: Odor on Spring Valley Rd.

**ATTENTION:** This email message is from an external sender. Do not open links or attachments from unknown senders. To report suspicious email, use the [Report Phishing button in Outlook](#).

Hi,  
I did a follow-up:

Leave LF – 11:25am  
Arrive at 495 Spring Valley Road – 11:41.....no odor noted  
495 Spring Valley Road – 11:50am.....no odor noted  
Leave Spring Valley Road – 12:02pm.....no odor noted.  
Arrive back at LF – 12:15pm.....light trash odor directly at working face. No odor on perimeter roads.

Time	Temperature	Dew Point	Humidity	Wind	Speed	Gust	Pressure	Pre
11:04 AM	31.4 °F	15.4 °F	51 %	West	0.1 mph	0.1 mph	30.26 in	
11:09 AM	32.2 °F	16.6 °F	52 %	SSE	0.1 mph	0.1 mph	30.26 in	
11:14 AM	32.3 °F	15.9 °F	50 %	SSW	1.1 mph	5.6 mph	30.26 in	
11:19 AM	32.2 °F	15.8 °F	50 %	South	0.1 mph	2.6 mph	30.26 in	
11:24 AM	32.7 °F	16.3 °F	50 %	West	0.6 mph	0.6 mph	30.26 in	
11:29 AM	32.6 °F	16.2 °F	50 %	SW	0.8 mph	3.1 mph	30.26 in	
11:34 AM	32.8 °F	16.3 °F	50 %	SSW	0.3 mph	1.6 mph	30.26 in	

11:39 AM	32.6 °F	15.8 °F	50 %	SW	0.0 mph	0.0 mph	30.26 in
11:44 AM	33.2 °F	16.6 °F	50 %	West	0.1 mph	0.1 mph	30.25 in
11:49 AM	33.2 °F	16.3 °F	49 %	South	0.9 mph	3.8 mph	30.25 in
11:54 AM	33.3 °F	15.8 °F	48 %	WSW	0.8 mph	3.6 mph	30.25 in
11:59 AM	33.1 °F	15.8 °F	48 %	SW	0.3 mph	2.4 mph	30.25 in
12:04 PM	33.0 °F	16.0 °F	49 %	West	0.2 mph	1.8 mph	30.24 in
12:09 PM	33.7 °F	15.8 °F	47 %	SSW	0.6 mph	2.8 mph	30.24 in
12:14 PM	33.0 °F	15.4 °F	48 %	SW	0.3 mph	1.9 mph	30.23 in
12:19 PM	33.5 °F	15.9 °F	48 %	West	0.2 mph	1.6 mph	30.23 in

We will have another follow-up at end of day.....

---

**From:** Faulch, Amy <[afaulch@pa.gov](mailto:afaulch@pa.gov)>  
**Sent:** Friday, February 14, 2025 10:48 AM  
**To:** Joe Klobusicky <[jklobusicky@chrin.org](mailto:jklobusicky@chrin.org)>  
**Cc:** McNulty, Edward <[edmcnulty@pa.gov](mailto:edmcnulty@pa.gov)>  
**Subject:** Odor on Spring Valley Rd.

Hi Joe,

I was just out doing an odor patrol, and I got some garbage odors at the end of Spring Valley Rd. Is someone from Chrin available to follow-up in that area today?

**Amy E. Faulch** | Solid Waste Supervisor  
Department of Environmental Protection | Waste Management  
Bethlehem District Office  
4530 Bath Pike | Bethlehem, PA 18017  
Phone: 610.861.2063  
[www.depweb.state.pa.us](http://www.depweb.state.pa.us)

**DEP is Going Paperless:** To assist DEP in reaching this goal, the NERO Waste Management Program is requesting that **ALL documents** submitted to the Northeast Regional Office Waste Management Program, with the exception of documents submitted through the ePermitting or OnBase applications, be submitted by email as an attachment to this resource account [ra-epwm-nero@pa.gov](mailto:ra-epwm-nero@pa.gov)

## Faulch, Amy

---

**From:** Joe Klobusicky <jklobusicky@chrin.org>  
**Sent:** Wednesday, February 19, 2025 11:52 AM  
**To:** Faulch, Amy; McNulty, Edward  
**Subject:** Re: [External] updates  
**Attachments:** PADEP inspection 2 19 2025.pdf; weather 2 19 2025.pdf

Here is what i have from today's inspection

---

**From:** Faulch, Amy <a Faulch@pa.gov>  
**Sent:** Wednesday, February 19, 2025 11:24 AM  
**To:** Joe Klobusicky <jklobusicky@chrin.org>; McNulty, Edward <edmcnulty@pa.gov>  
**Subject:** RE: [External] updates

Thank you Joe!

**Amy E. Faulch** | Solid Waste Supervisor  
Department of Environmental Protection | Waste Management  
Bethlehem District Office  
4530 Bath Pike | Bethlehem, PA 18017  
Phone: 610.861.2063  
[www.depweb.state.pa.us](http://www.depweb.state.pa.us)

**DEP is Going Paperless:** To assist DEP in reaching this goal, the NERO Waste Management Program is requesting that **ALL documents** submitted to the Northeast Regional Office Waste Management Program, with the exception of documents submitted through the ePermitting or OnBase applications, be submitted by email as an attachment to this resource account [ra-epwm-nero@pa.gov](mailto:ra-epwm-nero@pa.gov)

---

**From:** Joe Klobusicky <jklobusicky@chrin.org>  
**Sent:** Wednesday, February 19, 2025 8:54 AM  
**To:** Faulch, Amy <a Faulch@pa.gov>; McNulty, Edward <edmcnulty@pa.gov>  
**Subject:** [External] updates

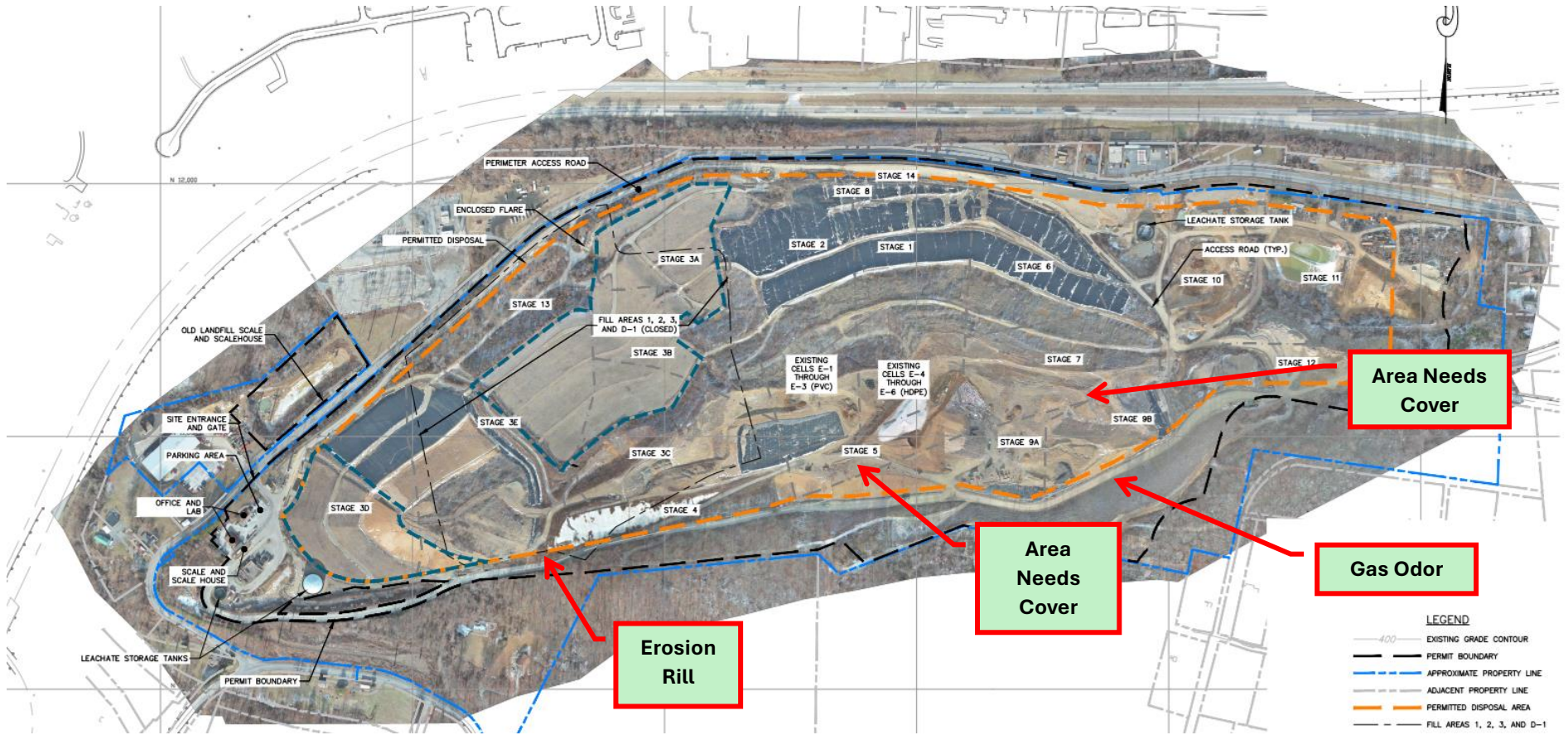
**ATTENTION:** This email message is from an external sender. Do not open links or attachments from unknown senders. To report suspicious email, use the [Report Phishing button in Outlook](#).

Hi Amy, Ed,

Attached is the recent flyover / topo for the site.

Also - the weather station parts are in and the consultant will be here on Tuesday (2/25) to install.

Joe k







**Erosion Rill**





**Area needs cover**



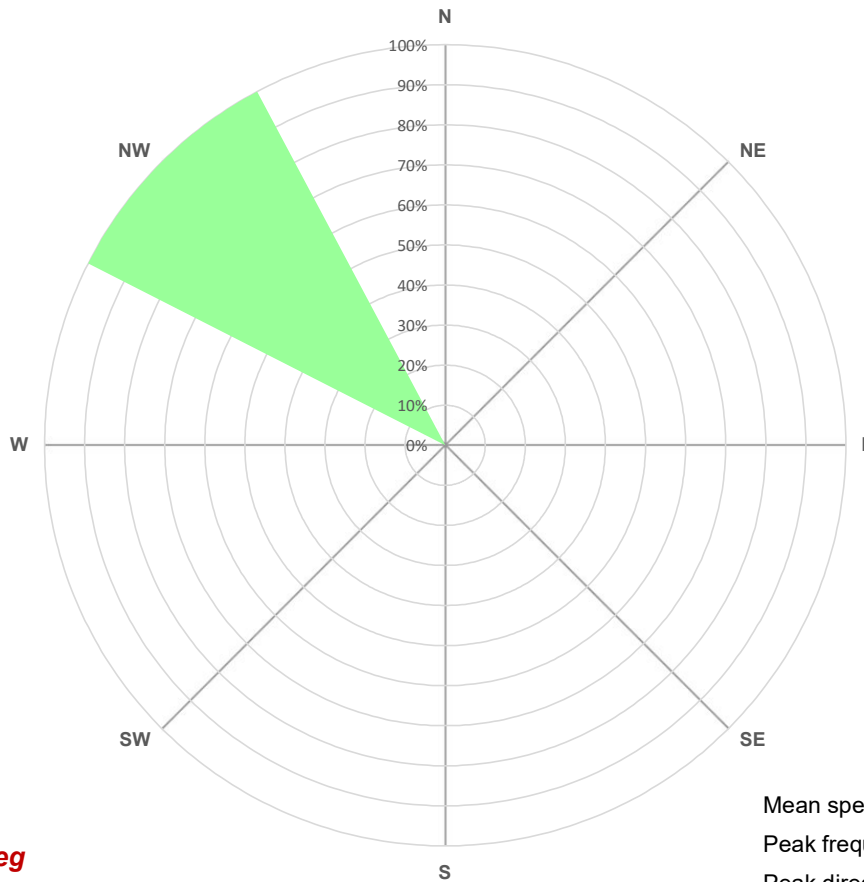
**Gas odor area**





# Chrin Landfill

Wednesday, February 19, 2025 - 10:00am



Wind speed (mph)

- 72.00 to 999.00
- 63.00 to 72.00
- 54.00 to 63.00
- 46.00 to 54.00
- 38.00 to 46.00
- 31.00 to 38.00
- 24.00 to 31.00
- 18.00 to 24.00
- 12.00 to 18.00
- 7.00 to 12.00
- 3.00 to 7.00
- 1.00 to 3.00

**Temp - 21 deg**  
**WS - 5-8**  
**WD - West / Northwest**  
**Bp - 30.30**  
**Rh - 49%**

Mean speed: 8.00  
Peak frequency: 100.00%  
Peak direction: NW  
Percent calm: 0.00%  
Calm defined as: < 1.00 mph

Electronic File Distribution:

Facility

Williams Township

R. Bellas/R. Miller

AQ: R. Mullin/ M. Bardzilouskas/C. Ostrowski

M. Glogowski

R. Malizia

A. Faulch

Chrin: Joseph Klobusicky

[jklobusicky@chrin.org](mailto:jklobusicky@chrin.org)

Williams Township: Melody Ernst

[mernst@williamstwp.org](mailto:mernst@williamstwp.org)